



**AD** **ADVANCED**<sup>™</sup>  
DIAGNOSTICS



# OBD Snoop ID88

A world-first cloning solution

Compatible with  
Volkswagen\*  
Group MQB



# OBD Snoop ID88

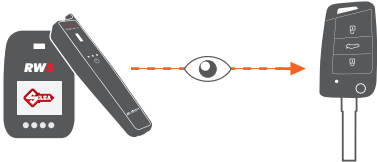
## Compatible with Volkswagen\* Group MQB

A world-first cloning solution for best-selling models like the Golf, Polo, Tiguan, Audi\* A3, Skoda\* Octavia and the Seat\* Ibiza. The new OBD Snoop ID88 from Advanced Diagnostics used together with the RW5 or Smart Aerial+ and the MYKEYS Pro app, clones bladed keys for a range of Volkswagen\* Group MQB models.

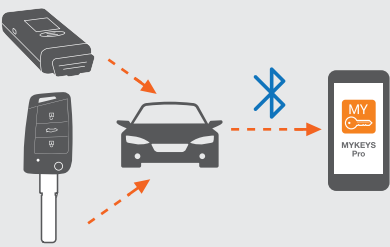
PIKX - OBD ID88 - GB  
8 052782104142

### CLONING PROCESS

**1** RW5 or Smart Aerial+ reads the original key



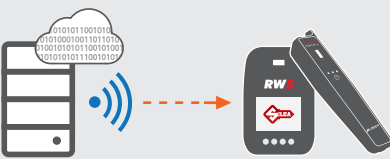
**2** OBD Snoop reads the vehicle data and sends it to MYKEYS Pro



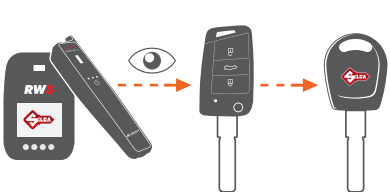
**3** MYKEYS Pro sends the data to the cloud via internet



**4** The data is processed in the cloud and sent back to the RW5 or Smart Aerial+



**5** The new key is written using the RW5 or Smart Aerial+



### MAIN FEATURES

#### Reliable, familiar key duplication

Duplicate the most popular Volkswagen\*, Audi\*, Seat\* and Skoda\* models in the familiar way you clone other vehicle keys.

#### 'Plug and Play'

The OBD Snoop automatically detects the vehicle system to read; no need to enter the make, model or year.

#### Cable-free - Battery-free

The OBD Snoop connects directly with the vehicle OBD port and is powered by the vehicle. No battery is needed. Data is then communicated to the MYKEYS Pro app remotely via Bluetooth.

#### Secure process

The cloning process is safe and without risk, no intervention on the vehicle is necessary. The MYKEYS Pro app advises if the model is not compatible with cloning immediately the OBD Snoop is connected to the vehicle.

#### Expands the capabilities of the RW5 and Smart Aerial+

Silca and Advanced Diagnostics are committed to evolving the unique potential of the cloud cloning technology to deliver new features and functions to the RW5 and Smart Aerial+

#### Guided procedures

The RW5 display, or the MYKEYS Pro app in the case of Smart Aerial+, guides you step-by-step through the cloning procedure to make the whole process trouble-free.

#### Reach new customers

The OBD Snoop broadens the range of cloneable keys and therefore broadens the selling opportunity. Cloning a standard key without the remote also means a more affordable key for your customer.

#### Quality assured

Designed and developed in Europe by the leader in cloning technology, all Silca and Advanced Diagnostics devices are CE certified. The cloning data is processed using proprietary servers.

#### Patent Pending Solution



Compatible only with GTI Ultra transponders (rewritable 3 times)



### APPLICATIONS\*\*

MAKE*	MODEL	FROM	TO	MAKE*	MODEL	FROM	TO
AUDI*	A3	2012	2017	SKODA*	OCTAVIA	2014	2023
AUDI*	Q2	2017	2019	SKODA*	RAPID	2013	2023
AUDI*	S3	2015	2017	SKODA*	SUPERB	2015	2023
SEAT*	ATECA	2016	2018	VOLKSWAGEN*	CRAFTER	2018	2023
SEAT*	CUPRA	2016	2017	VOLKSWAGEN*	GOLF	2013	2018
SEAT*	IBIZA	2015	2017	VOLKSWAGEN*	POLO	2014	2017
SEAT*	LEON	2012	2023	VOLKSWAGEN*	TIGUAN	2015	2018
SEAT*	TOLEDO	2013	2023	VOLKSWAGEN*	TOURAN	2016	2023
SKODA*	FABIA	2014	2020				

\*\* Not all vehicle systems covered.

(\*) In compliance with current regulations relating to industrial property, please note that - but for "Silca", "domskabs", "Kobas", "ilca" and "Advanced Diagnostics" - the trademarks or trade names mentioned in our document are the exclusive property of third parties and not of Silca S.p.A. or Advanced Diagnostics. We do not intend to imitate or copy the trademarks of other companies. We do not intend to imitate or copy the trademarks of other companies. The trademarks of other companies mentioned in this document are used only to indicate the intended purpose of Silca's products. / This brochure is reserved exclusively for professional key cutters who use Silca products. The illustrations and technical data regarding the products in the document are to be considered indicative. Silca reserves the right to alter products designs, dimensions or into to improve the products quality. The contents of this document are fully protected by Copyright and may not be copied or reproduced in any form, without written permission from Silca S.p.A. Any controversy shall be settled by the Courts where the company Silca S.p.A. has its headquarters, with express exclusion of any other court.

SILCA S.p.A. Via Podgora, 20 (Z.I.) - 31029 Vittorio Veneto (TV) - Italy  
Telephone +39 0438 9136 Fax +39 0438 913800

[www.silca.biz](http://www.silca.biz) - [www.silca-automotive.com](http://www.silca-automotive.com)  
[www.advanced-diagnostics.com](http://www.advanced-diagnostics.com)



dormakaba Group