



**AD** **ADVANCED**<sup>™</sup>  
DIAGNOSTICS



**SMART**  
Aerial +



# SMART Aerial+ Cloud Cloning Solution

The Smart Aerial+ from Advanced Diagnostics simplifies and speeds the key cloning process.

Cloning calculations are made using Advanced Diagnostics proprietary servers to guarantee reliability, ensuring that the latest routines are always available and time-consuming software updates are avoided.

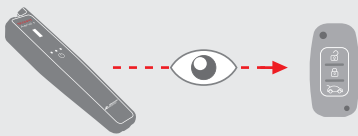
Smart Aerial+ works hand in hand with the MYKEYS Pro app to guide the user through the entire cloning process, providing all the necessary information needed to deliver a perfect duplicate key.

P1JS - DEPL. S.A. - EN  
8 052 782 40264 11

(\*) In compliance with current regulations relating to industrial property, please note that - but for "Silca", "Ilco", "dommakaba", "Kaba", "ilco" and "Advanced Diagnostics" - the trademarks or trade names mentioned in our document are the exclusive property of third parties not affiliated nor linked with Silca S.p.A. or the dormakaba Group. Silca S.p.A. and dormakaba Group do not own any intellectual property right nor have been granted any license with regard to such trademarks and trade names, which are hereby used only to indicate the intended purpose of Silca's products. / This brochure is reserved exclusively for professional key cutters who use Silca products. The illustrations and technical data regarding the products in the document are to be considered indicative. Silca reserves the right to alter products designs, dimensions or info to improve the products quality. The contents of this document are fully protected by Copyright and may not be copied or reproduced in any form, without written permission from Silca S.p.A. Any controversy shall be settled by the Courts where the company Silca S.p.A. has its headquarters, with express exclusion of any other court.

## CLONING PROCESS

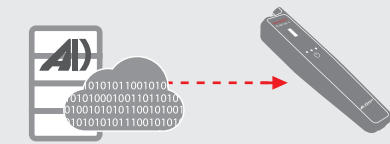
**1** Smart Aerial+ reads original key data



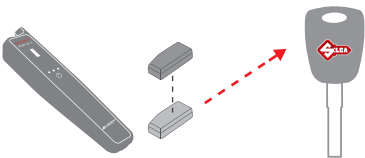
**2** Data sent to cloud for calculation



**3** Cloning data sent back to Smart Aerial+



**4** Smart Aerial+ clones the transponder to create a new key



## TECHNICAL DATA

**Power supply:** 5 VDC mains connection via USB port, 3.7 VDC integrated battery

**Connection:**  
Wi-Fi - Bluetooth

**Dimensions:**  
Length: 210 mm, Width: 48 mm  
Depth: 30 mm

**Weight (unpacked):** 120 g

**CE** CE Certified Made in Italy

## MAIN FEATURES



**FAST**  
Cloning process  
up to **3X faster\***



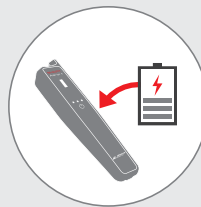
**FUTURE PROOF**  
Updateable, no  
memory capacity limits



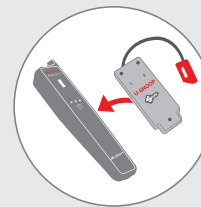
**GUIDED PROCEDURES**  
Step by step using the  
MYKEYS Pro app



**RELIABLE**  
Superior data  
processing power using  
AD proprietary servers



**PORTABLE**  
Integrated,  
rechargeable  
battery



**EASIER CLONING**  
with Snoop  
functions  
included

\* For the ID46 cloning procedure compared to the Silca RW4 Plus.

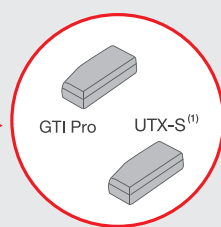
## GTI PRO / UTX-S<sup>(1)</sup> TRANSPONDERS

GTI PRO and UTX-S<sup>(1)</sup> are the new Silca multi-transponders with a wide technology coverage to reduce inventory.

**GTI-W**  
Multi Transponder

**T80+**  
DST 80

**ID8C**  
Temic Crypto Mazda\*\*



**T49C**  
Honda\*\* "G"

**T128C**  
Toyota\*\* H

**T5**  
Temic\*\* ID (11,12,13,33)

<sup>(1)</sup> Service fee needed

SILCA S.p.A. Via Podgora, 20 (Z.I.) - 31029 Vittorio Veneto (TV) - Italy  
Telephone +39 0438 9136 Fax +39 0438 913800

[www.silca.biz](http://www.silca.biz) - [www.silca-automotive.com](http://www.silca-automotive.com)  
[www.advanced-diagnostics.com](http://www.advanced-diagnostics.com)

